

exkal

e FOR FUTURE GENERATIONS

ISLAS PLUGIN **TENERIFE**

SOSTENIBLE Y MONOCASCO / SUSTAINABLE AND MONOBLOCK /
DURABLE ET MONOCOQUE / NACHHALTIG UND MONOBLOCK

+ **VISIÓN PRODUCTO** / PRODUCT VISIBILITY / VISIBILITÉ PRODUITS /
PRODUKPRÄSENTATION

ERGONOMÍA / ERGONOMY / ERGONOMIE / ERGONOMIE

OPTIMIZACIÓN ESPACIO VENTA / RETAIL FOOTPRINT
OPTIMIZATION / RETAIL FOOTPRINT OPTIMISATION /
VERKAUFSFLÄCHENOPTIMIERUNG

+ **ÁREA TOTAL EXPOSICIÓN** / TOTAL DISPLAY AREA / TDA / TDA



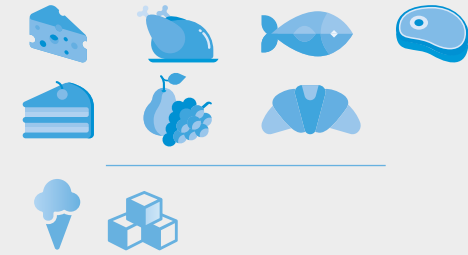
ISLASINTEGRALES

exkalsa.com

ISLAS / ISLANDS / ILOTS / INSELN

3M1

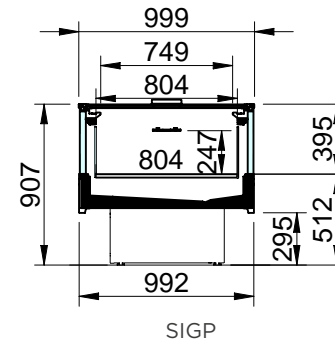
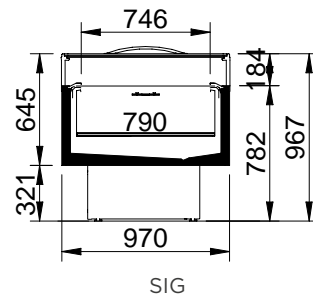
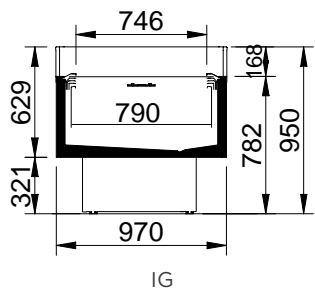
3L3

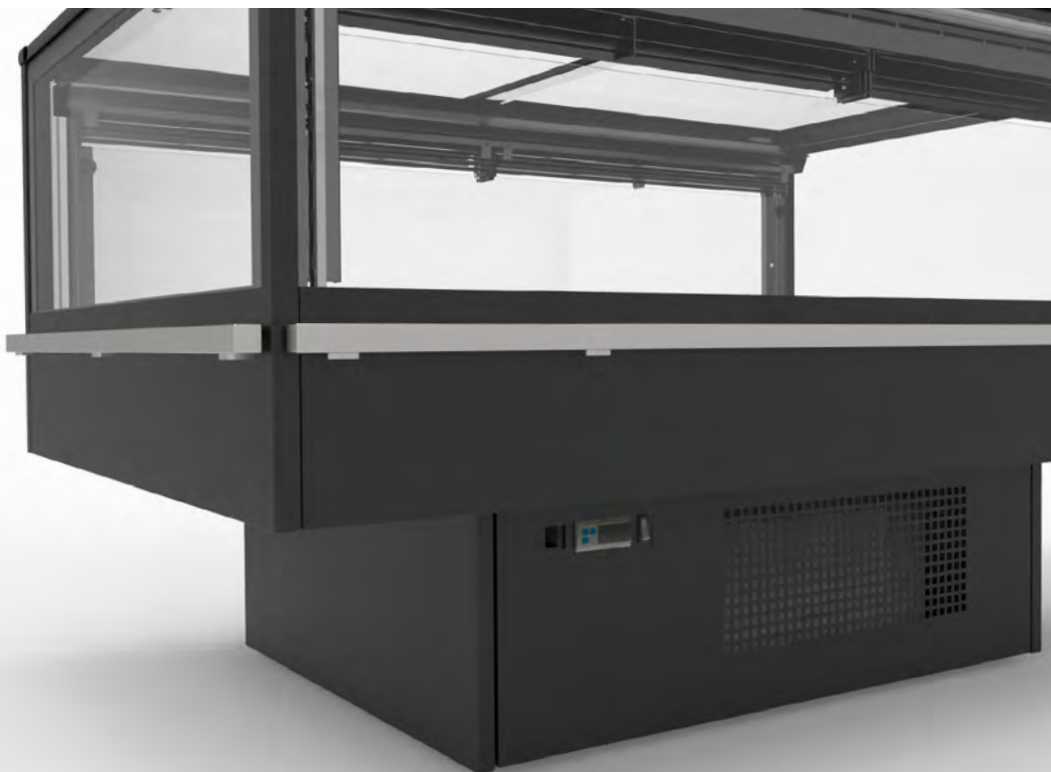
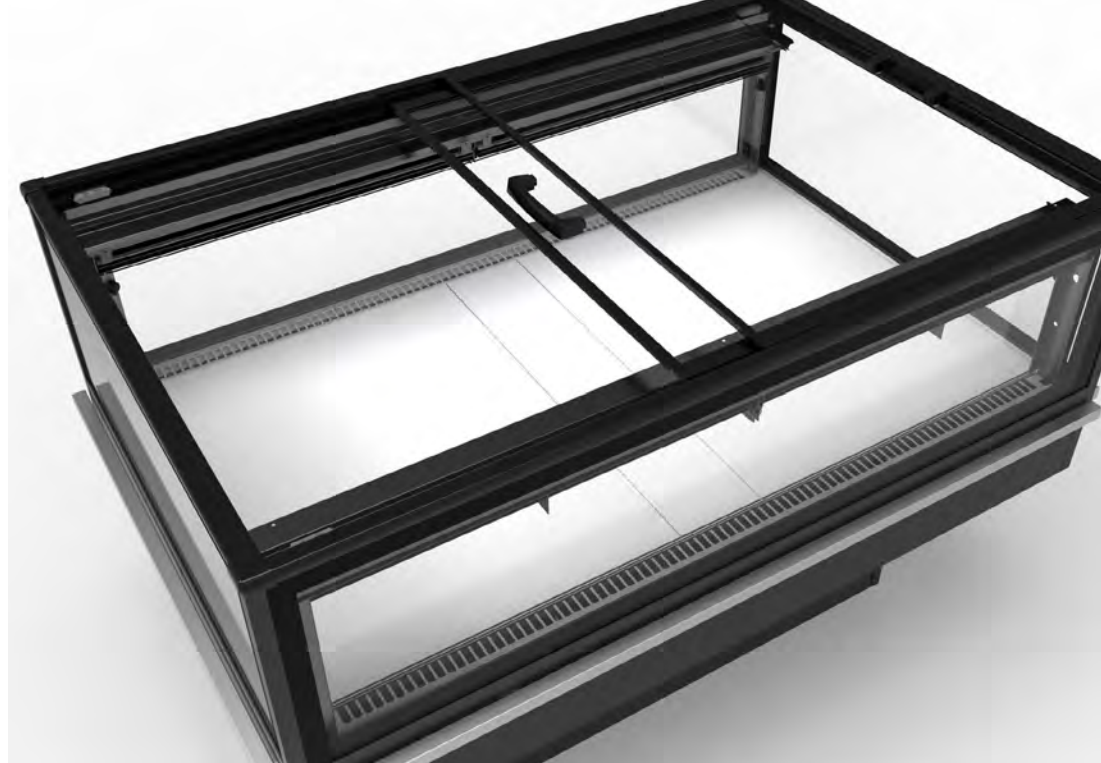
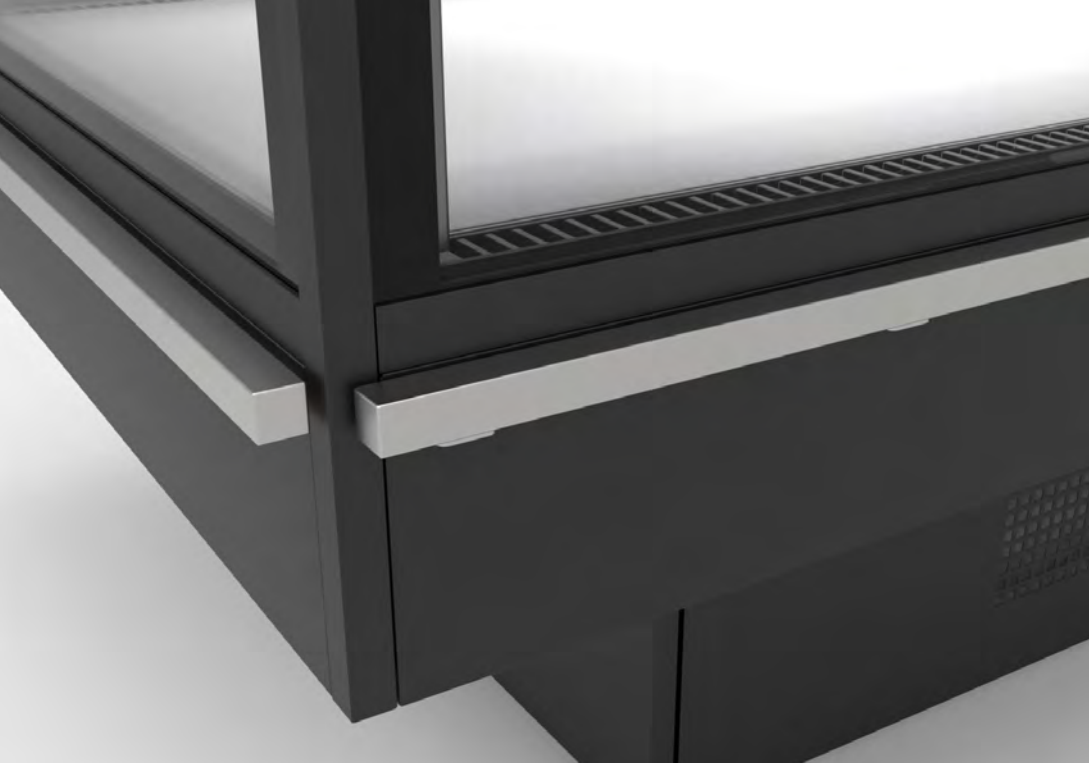


			2			3			4		
mm			1510			2010			2510		
			TDA	Vol	Suf	TDA	Vol	Suf	TDA	Vol	Suf
			m ²	l	m ²	m ²	l	m ²	m ²	l	m ²
	IG1	3M1	1,06	245	1,1	1,43	332	1,49	1,81	419	1,88
	IG5	3L3	1,06	245	1,1	1,43	332	1,49	1,81	419	1,88
		IG15	3M1 & 3L3	1,06	245	1,1	1,43	332	1,81	419	1,88
	SIG1	3M1	1,01	245	1,1	1,39	332	1,49	1,75	419	1,88
	SIG5	3L3	1,01	245	1,1	1,39	332	1,49	1,75	419	1,88
		SIG15	3M1 & 3L3	1,01	245	1,1	1,39	332	1,75	419	1,88
	SIGP1	3M1	2,17	280	1,1	2,8	379	1,49	-	-	-
		SIGP15	3M1 & 3L3	2,17	280	1,1	2,8	379	-	-	-

TDA = Área Total de Exposición / Total Display Area / Zone d'affichage totale / Gesamtausstellungsfläche • Vol = Volumen neto / Net volume / Volume net / Nettovolumen • Suf = Superficie de exposición / Exhibition surface / Surface d'exposition / Ausstellungsfläche.
Best energy class model. More information at EPREL or contact our Sales Department.

SECCIONES / SECTIONS / SECTIONS / SCHNITTE





exkal

FOR FUTURE GENERATIONS

Pol. Ind. El Campillo, C/A N° 1, 31340, Marcilla, Navarra
(España - Spain)

+34 948 708 292 | exkalsa@exkalsa.com | exkalsa.com

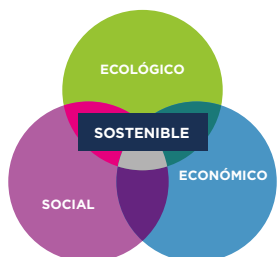
exkal
CONCEPT

exkalconcept.com

horexkal



horexkal.com



SR-0009-ES



SI-0011/2021



ER-0149/2011



SST-0022/2011



GA-2011/0074

