

# exkal

e FOR FUTURE GENERATIONS

GAMA 1

## MURALES GAMA 1 ALPES ULTRA

GAMA 1 / RANGE 1 / GAMME 1 / BEREICH 1

SOSTENIBLE Y MONOCASCO / SUSTAINABLE AND MONOBLOCK /  
DURABLE ET MONOCOQUE / NACHHALTIG UND MONOBLOCK

+ VISIÓN PRODUCTO / PRODUCT VISIBILITY / VISIBILITÉ PRODUITS /  
PRODUKPRÄSENTATION

ERGONOMÍA & PUERTA BATIENTE / ERGONOMY & HINGED DOORS /  
ERGONOMIE & SWING PORTES / ERGONOMIE & DREHTÜR

OPTIMIZACIÓN ESPACIO VENTA / RETAIL FOOTPRINT  
OPTIMIZATION / RETAIL FOOTPRINT OPTIMISATION /  
VERKAUFSFLÄCHENOPTIMIERUNG

+ ÁREA TOTAL EXPOSICIÓN / TOTAL DISPLAY AREA / TDA / TDA



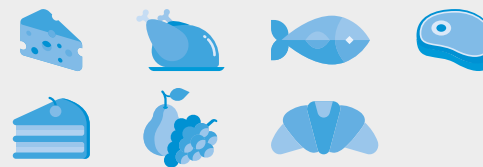
ALPES  
MURALESALPES

[exkalsa.com](http://exkalsa.com)

# GAMA 1

MURALES / MULTIDECKS /  
VERTICAUX / VERTIKALE

# 3M1



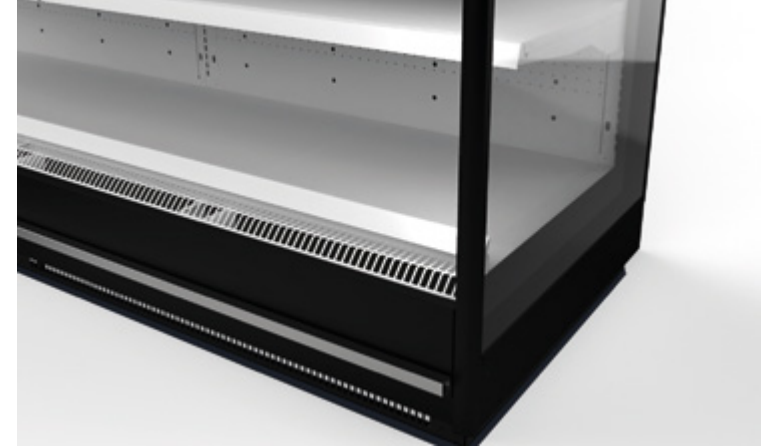
## GAMA 1 / RANGE 1 / GAMME 1 / BEREICH 1

A T G	D			2			3			4			5			6			C	20			30			40			50		
	mm	TDA	Vol	Suf	TDA	Vol	Suf	TDA	Vol	Suf	TDA	Vol	Suf	TDA	Vol	Suf	TDA	Vol		Suf	TDA	Vol	Suf	TDA	Vol	Suf	TDA	Vol	Suf	TDA	Vol
	m <sup>2</sup>	l	m <sup>2</sup>	m <sup>2</sup>	l	m <sup>2</sup>	m <sup>2</sup>	l	m <sup>2</sup>	m <sup>2</sup>	l	m <sup>2</sup>	m <sup>2</sup>	l	m <sup>2</sup>	m <sup>2</sup>	l	m <sup>2</sup>	m <sup>2</sup>	l	m <sup>2</sup>	m <sup>2</sup>	l	m <sup>2</sup>	m <sup>2</sup>	l	m <sup>2</sup>	m <sup>2</sup>	l	m <sup>2</sup>	
VLCU1	210	863	2,68	315	1294	4	420	1725	5,36	525	2156	6,72	630	2588	8,04	4,00	1275	4,01	-	-	-	-	-	-	-	-	-	-	-	-	-
VLNU1	210	1063	3,32	315	1594	4,98	420	2125	6,64	525	2656	8,30	630	3188	9,96	4,34	1445	4,53	2,62	1329	4,16	3,94	1992	6,24	5,25	2655	8,32	6,56	3319	10,40	
VLSU1	210	1263	3,92	315	1894	5,88	420	2525	7,84	525	3156	9,80	630	3788	11,76	4,63	1594	4,98	2,62	1580	4,90	3,94	2366	7,37	5,25	3155	9,80	6,56	3944	12,27	
VLWU1	223	1300	4,06	334	1950	6,09	445	2600	8,12	556	3250	10,15	668	3900	12,18	5,01	1785	5,60	-	-	-	-	-	-	-	-	-	-	-	-	
VHCU1	229	938	3,19	343	1406	4,76	458	1875	6,38	572	2344	8	686	2813	9,57	4,37	1395	4,78	-	-	-	-	-	-	-	-	-	-	-	-	
VHNU1	229	1163	3,96	343	1744	5,94	458	2325	7,92	572	2906	9,90	686	3488	11,88	4,73	1581	5,40	2,86	1455	4,96	4,29	2179	7,44	5,72	2905	9,92	7,15	3632	12,40	
VHSU1	229	1388	4,68	343	2081	7,02	458	2775	9,36	572	3469	11,70	686	4163	14,04	5,05	1744	5,94	2,86	1736	5,85	4,29	2601	8,80	5,72	3468	11,70	7,15	4335	14,65	
VHWU1	241	1413	4,82	362	2119	7,23	483	2825	9,64	603	3531	12,05	724	4238	14,46	5,46	1953	6,68	-	-	-	-	-	-	-	-	-	-	-	-	

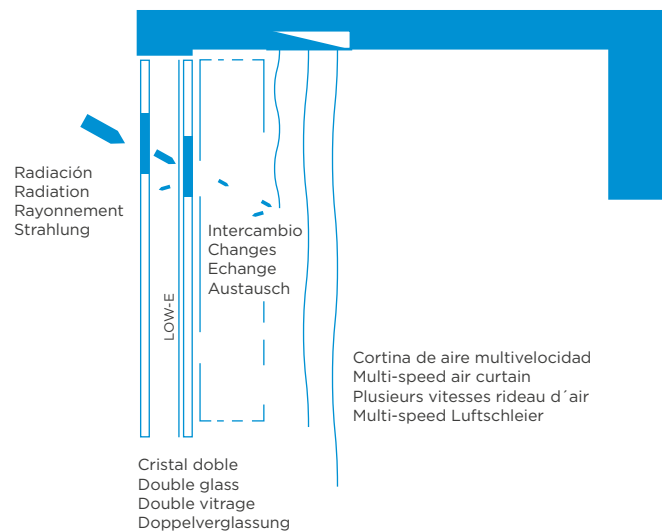
TDA = Área Total de Exposición / Total Display Area / Zone d'affichage totale / Gesamtausstellungsfläche • Vol = Volumen neto / Net volume / Volume net / Nettovolumen • Suf = Superficie de exposición / Exhibition surface / Surface d'exposition / Ausstellungsfläche.

Best energy class model. More information at EPREL or contact our Sales Department.

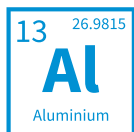
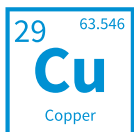
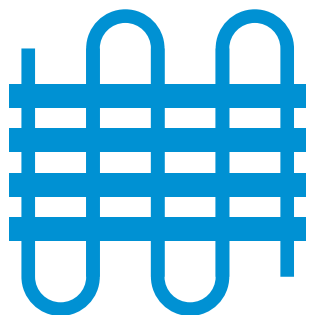




**ADS AIR DISTRIBUTION SYSTEM**



**EVAPORATOR**



**MONOBLOCK**





# exkal

FOR FUTURE GENERATIONS

Pol. Ind. El Campillo, C/A N° 1, 31340, Marcilla, Navarra  
(España - Spain)  
+34 948 708 292 | [exkalsa@exkalsa.com](mailto:exkalsa@exkalsa.com) | [exkalsa.com](http://exkalsa.com)

## exkal

CONCEPT

[exkalconcept.com](http://exkalconcept.com)

## horexkal



[horexkal.com](http://horexkal.com)

